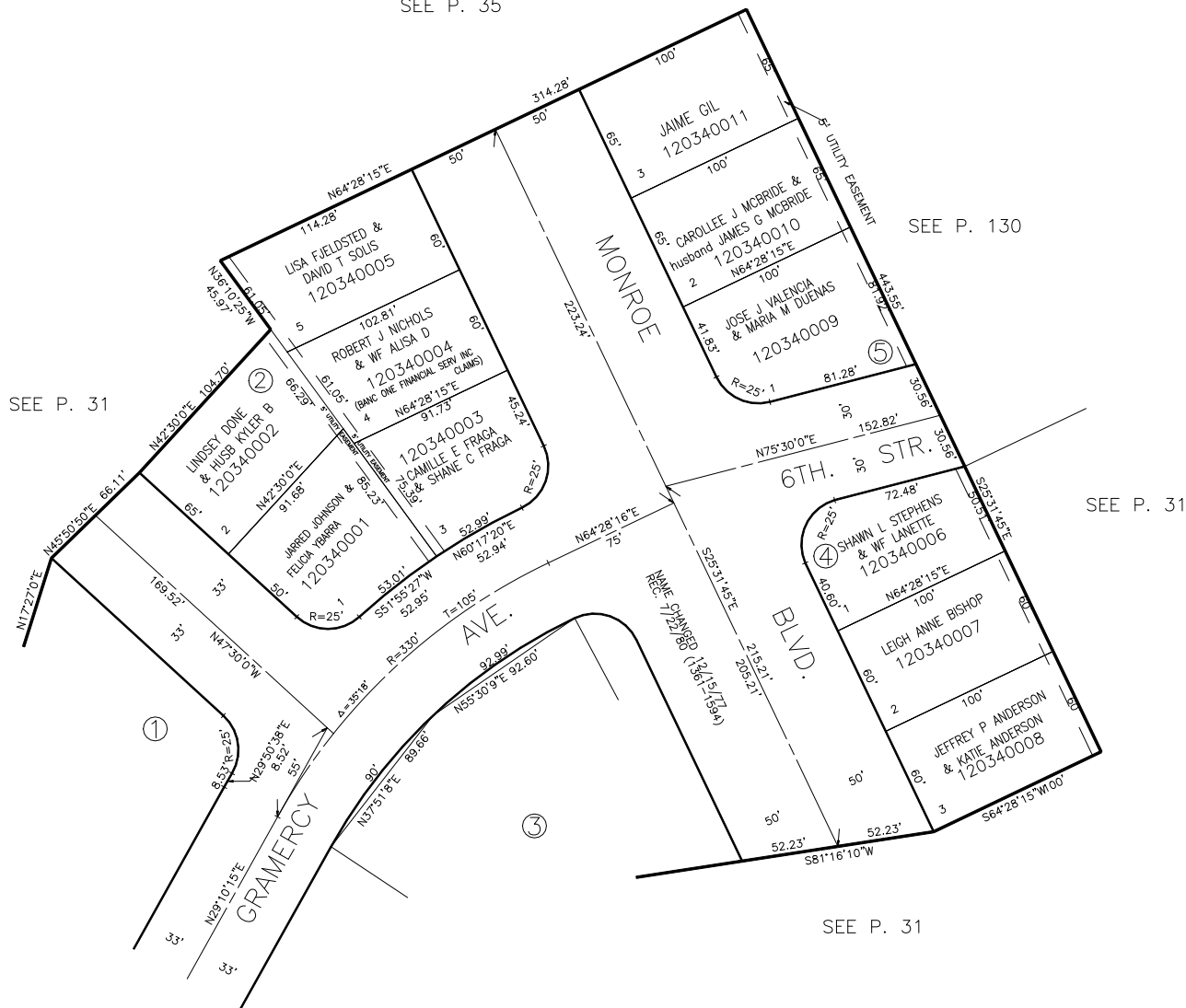


PART OF THE S.E. 1/4, OF SEC. 16, T.6N., R.1W., S.L.B. & M.
NORTH PARK NO. 1

IN OGDEN CITY
SCALE 1" = 50'

TAXING UNIT: 25

SEE P. 35



FOR COMPLETE ENG DATA SEE
ORIGINAL DEDICATION PLAT IN
BOOK 11, PAGE 65 OF RECORDS.